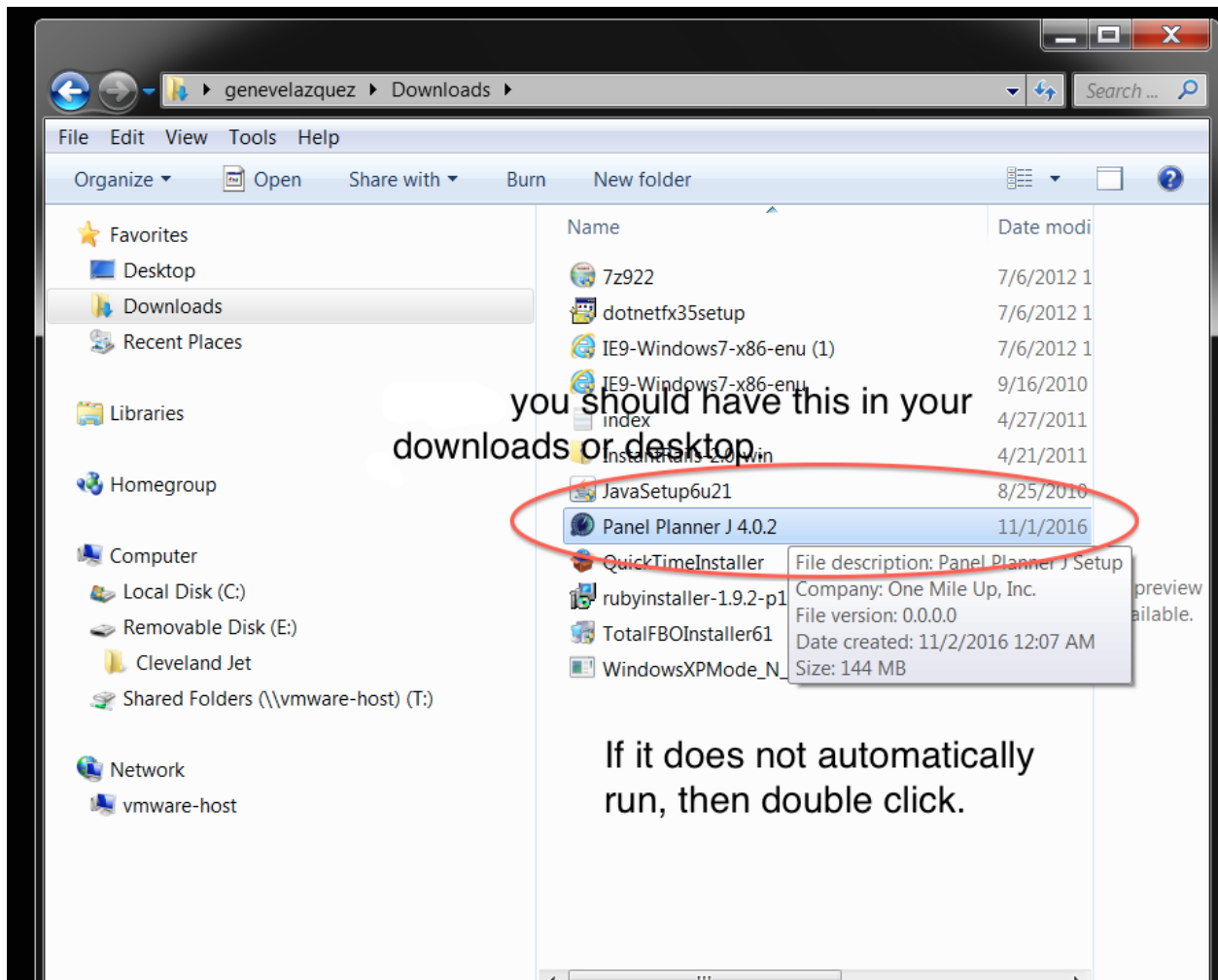


## STEPS TO INSTALL THE PANEL PLANNER

**1** – Download the ZIP file from the website after purchase, or from the receipt link sent to your email after purchase.

**2** - Locate the downloaded ZIP file and extract it to your local folder. Remember where you are extracting the file. Locate the extracted file and start installing by double clicking on the file ( see figure below).

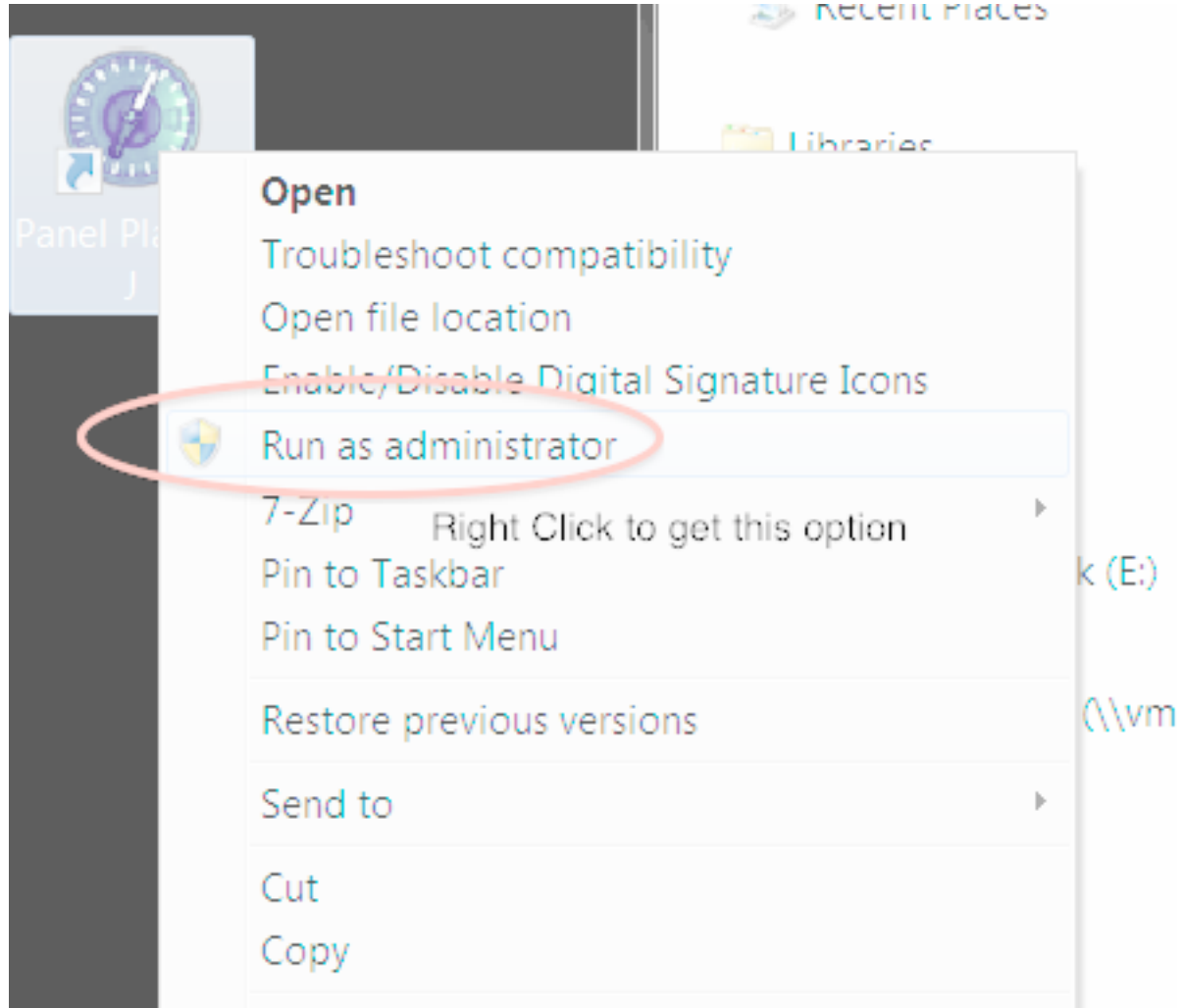


**3** - Run or Double Click the Panel Planner J 4.0.2 Installer

Click Install and run to completion, it will take about 10 minutes. Be sure you also run the edata update by clicking Start.

**4** - Run Panel Planner J as an Administrator

You do this by Right Clicking on the Panel Planner J icon on your desktop, like in the graph below...



Use your **serial number**, if you do not have one let us know via email. [gene@onemileup.com](mailto:gene@onemileup.com)